

DESCRIPTION

The NSI-700S-90 is an ideal system for measuring antennas in the wireless industry. It is a versatile system designed for testing electrical small antennas and for mobile station testing per CTIA OTA test requirements. The NSI-700S-90 uses an overhead dielectrically swing-arm for probe motion in the theta axis, and a dielectric AUT support stage for motion in the phi axis. The overall system is specifically designed to eliminate the adverse effects from interactions between the AUT and the surrounding environment. It is the ideal solution for providing complete 3D characterization of the antenna or wireless device.

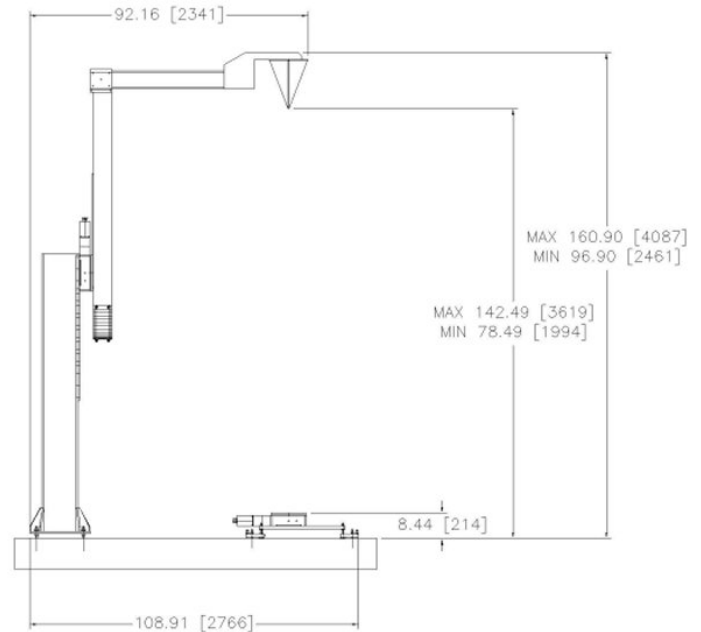
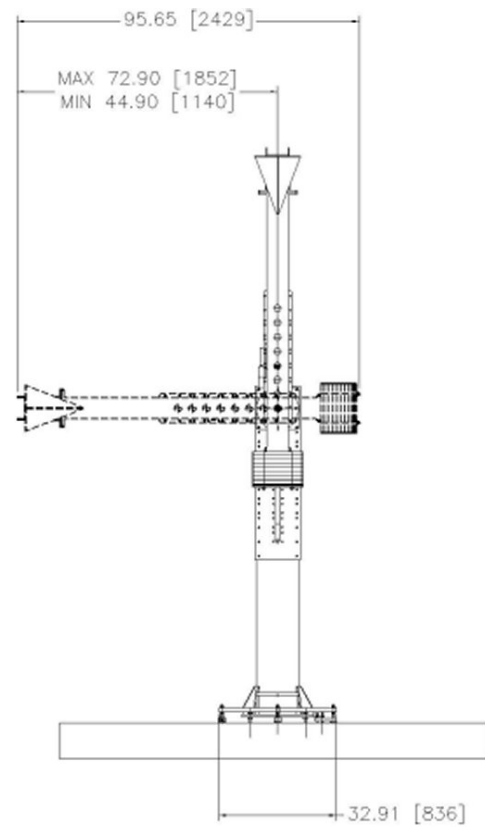
CAPABILITIES

The NSI-700S-90 includes the industry-leading NSI Antenna Measurement software and CTIA OTA software. The testing can be executed in far-field and spherical near-field modes for complete characterization of the antenna's performance. The system can provide single cuts, complete 3D analysis capabilities, holographic back projection capability, and more. The CTIA OTA software is compliant with the "Test Plan for Mobile Station Over the Air Performance," and the system is designed to be part of an overall CTIA Authorized Test Laboratory (CATL).

FEATURES

- Complete 3D characterization
- Dielectrics & optimized design to reduce reflections
- Wideband, dual-port probe
- 800 MHz to 6 GHz (expandable to 500 MHz to 18 GHz)
- CTIA OTA Performance Testing
- Far-field & spherical near-field modes
- Far-field, near-field, and holographic analysis
- EIRP Measurements
- Table-top mounting facilitates mounting of laptops, phantom heads, etc
- Precision, laser-based alignment kit
- Adjusts to fit various room dimensions
- Low cost, easy to install

SPECIFICATIONS	
Construction	Dielectric swing arm and AUT support stand
Drive system	Precision Stepper Motors
Scan Area	360° Phi Up to 330° Theta
Scan Radius (maximum)	54.49" (1.38 m)
Scan Radius (minimum)	26.49" (0.67 m)
Resolution	0.01°
Position Repeatability	0.03°
Rotational Speed (Theta and Phi)	40°/sec Phi, 10°/sec Theta
Measurement Workstation	Pentium based PC with Windows operating system, keyboard, 17" LCD monitor
Stepper Motor Power Amplifier	EIA 19" rack mount. (7" high x 14" deep)
Probe	Electrically switched, dual-pol, log-periodic, 0.8 – 6 GHz, nominal (can be extended to 500 MHz to 18 GHz)
Supported RF Devices	Agilent PNA, ENA, 8530A, 8753D/ E Series, 8719/20/22 Series, NSI Panther, R&S CMU 200 BSS, Anritsu MT8820 BSS (contact NSI for complete list)



DIMENSIONS

- ◆ Width - See attached envelope sketches
- ◆ Depth - See attached envelope sketches
- ◆ Height - Variable, up to 161" (4.1 m)

ORDERING INFORMATION

NSI-700S-90 - Spherical Antenna Measurement System
Please contact the NSI Sales department to order this product.

Nearfield Systems, Incorporated

19730 Magellan Drive, Torrance, CA 90502, USA, Tel: 310.525.7000, Fax: 310.525.7100
Email: sales@nearfield.com. Visit our website: www.nearfield.com